



# Rock Island County Soil and Water Conservation District

Rock Island County SWCD Summer-Fall 2022 Newsletter

[www.RockIslandSWCD.org](http://www.RockIslandSWCD.org)

## HOHENBOKEN FAMILY HONORED BY AISWCD

*The Drew Hohenboken family received the Conservation Farm Family Runner-up Award at the Association of Illinois Conservation Districts Annual meeting on July 18<sup>th</sup> in Springfield, IL.*

*Drew became a cooperator with Rock Island SWCD in 1988. Since then, he has implemented a variety of conservation practices as indicated below.*

*He has used no-till farming on his HEL land of 33 acres for 17 years and reduced tillage on the remaining 451 acres of non-HEL ground. In addition, he has 27 acres of wetland restoration completed over 20 years ago. In 2004, Drew planted 12,000 hardwood tree seedlings on 15 acres in an area that was subject to flooding on his farmland using CRP to help fund the project. This land continues to be managed as a wildlife area. Additionally, he has implemented 47 acres of filter strips through the CRP program throughout his property.*



*Due to his hog manure being emptied into a nearby earthen lagoon, he had the waste collected and hauled out to the field rather than pollute a nearby creek. Recently, he stopped raising hogs and is now working with NRCS utilizing an EQIP contract to properly close the lagoon, so it won't pollute the groundwater.*



*In 2020, Drew participated in the IDOA Partners for Conservation Program and upgraded his grassed waterways with tile replacement and reshaping existing waterways with worn out seeding. Tied into this waterway project, Drew agreed to install a denitrifying bioreactor as part of a grant/research project with University of Illinois and Illinois EPA. The bioreactor was installed in 2021 and Rock Island SWCD held an installation field day at the site for area farmers and various other conservation professionals. He also participated in the IL Nutrient Loss Reduction Podcast on Bioreactors (Episode 41).*

*Rock Island SWCD wishes to congratulate Drew and his family on their achievement and commitment of protecting their most valuable natural resources – soil and water!*

# ABOUT US...

## RISWCD STAFF & LEADERSHIP

### CONSERVATION TEAM:



Dawn Temple ▪ Administrator  
dtemple@rockislandswcd.org



Rich Stewart ▪ Resource Conservationist  
rstewart@rockislandswcd.org



Joey Deloian ▪ Resource Conservationist II  
joseph.deloian@il.nacdnet.net



Joe Gates ▪ Conservation Specialist  
joe.gates@il.nacdnet.net



Lou Liva ▪ PCM Specialist  
lliva@precisionconservation.org

### BOARD OF DIRECTORS:

Gary Blanchard—Chair  
Chris Nordick—Vice-Chair  
Nathan Oak—Treasurer/Secretary  
Bill Parchert, III—Director  
Jason Flickinger—Director

### NRCS STAFF:

Jason Hessman  
District Conservationist  
  
Wyatt Junis  
Soil Conservationist



### DID YOU KNOW?

Rock Island Soil & Water Conservation staff participates on over 10 different committees and partnerships throughout the year that facilitate education events and foster collaboration around conservation. We also provide presentations for field days, educational events for youth, and at local partner events. Follow us on Facebook to stay up to date with all our activities!

# CONSERVATION SUCCESS STORIES

## COVER CROP FIELD DAY AT GORHAM FAMILY FARMS

On June 1<sup>st</sup>, nearly fifty participants gathered at Gorham Family Farms to learn how the Gorham family uses cover crops to reduce input costs and increase soil health. Farmer Keith Gorham spoke to fellow farmers, citizens and conservation professionals as they toured his corn and soybean fields in Drury Township.



Gorham Family Farms has been practicing no-till for the last twenty years and has grown cover crops over the last seven. Keith cited numerous benefits from his regenerative practices, specifically a reduction in required fertilizers and pesticides, stabilized yields, and increased water infiltration.

“Soil health equals lower input costs and higher profits,” states Keith Gorham. The Gorhams have always terminated their cover crops with a chemical burndown. This year marks the beginning of their use of a roller-crimper for termination. This machine mechanically bends and breaks the overwintering cereal rye. Keith emphasized the importance watching the plant’s growth stage while determining the right time for termination.



Precision Conservation Specialist, Lou Liva spoke on how Precision Conservation Management (PCM) can assist farmers in making conservation decisions, assessing the costs and returns of in-field conservation practices. In addition, PCM has numerous cost-share opportunities for grain farmers that are interested in beginning or enhancing in-field conservation practices on their farm. Lou can be contacted at (309)391-2346.

RISWCD’s Resource Conservationist II, Joey Deloian shared an overview on numerous federal and state programs that are available to farmers and landowners to assist with expenses of applying conservation practices such as no-till or cover crops including EQIP, CSP, and Partners for Conservation. For more information on any of our programs, contact our office at (309) 764-1486 X 3.



## BUTTERWORTH BEND MONARCH WAYSTATION



In partnership with the City of Moline and Keep Moline Beautiful, SWCD staff planted a Monarch Waystation at one of the gardens along Ben Butterworth Parkway. A variety of over 30 native pollinator plants and shrubs (most grown by our very own Joe Gates) as well as well some hazelnut trees and annual flowers were planted this spring on the site. Registration for the waystation was approved and the District received a sign to be placed designating it as a Monarch Waystation.

Stop by and visit the site! It is the circular garden down by the boat dock next to the City of East Moline levee. We expect a lot more blooms next year!



# FALL SALES

Orders Due By: Wednesday 9/21 \* Grass Carp Orders Due By: Sunday 9/11

**FISH SALE** Pick Up: Wednesday 9/28 @ 9:00 AM\* at QCCA Expo Center Parking Lot

Sale Questions: 309-764-1486 x3 \*Stocking Questions: IDNR Fisheries Biologist Dave Wyffels

**Make checks payable to: RISWCD, 3020 1st Ave E, Milan, IL 61264**

Species	Size	Price	Qty.	Subtotal
Channel Catfish	6-8 in	\$1.50 each		\$
	6-8 in	\$70 Bag of 50		\$
Hybrid Bluegill	1-2 in	\$95 Bag of 250		\$
	3-5 in	\$65 Bag of 50		\$
Largemouth Bass	3 in	\$75 Bag of 50		\$
	5-8 in	\$3.75 each OR \$175 Bag of 50		\$
Bluegill	1-2 in	\$95 Bag of 250		\$
	3-5 in	\$65 Bag of 50		\$
Redear Sunfish	1-2 in	\$95 Bag of 250		\$
Fathead Minnows	Avg.200 per lb.	\$14.00 per lb.		\$
**Triploid Grass Carp Rec: 6 /vegetated acre	10-14 in	\$14.00 each		\$
			<b>Total</b>	\$

**Remind me prior to pick up by:**

Phone  Email  Both

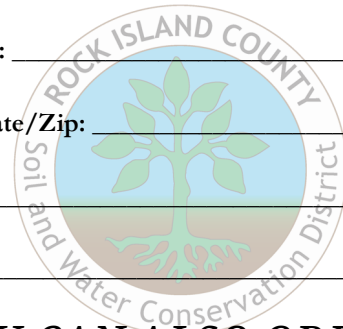
Name: \_\_\_\_\_

Address: \_\_\_\_\_

City/State/Zip: \_\_\_\_\_

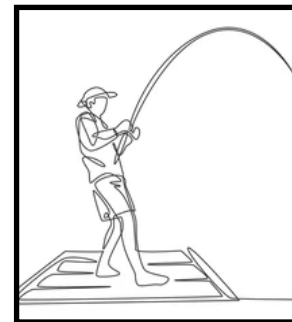
Phone: \_\_\_\_\_

Email: \_\_\_\_\_



**YOU CAN ALSO ORDER ONLINE:**

[www.rockislandswcd.org/fish.php](http://www.rockislandswcd.org/fish.php)



*Our new fish supplier offers Electrofishing surveys which includes a fish survey, vegetation/algae analysis, water quality analysis, depth analysis among other things.*

*If interested, please contact our office for more details. Cost is \$950.*

**\*\*REQUIRED FOR TRIPLOID GRASS CARP ORDERS**

County	Township, Range, Section If unknown, Property Address	Pond Size (Acres)	Water Name	# of Fish
Ex: Rock Island	T16N R2W S16	2ac	Pond	4

**Getting Your Fish Home Safely– Save This Portion of Form**

- All fish, except large catfish, will be pre-bagged and sealed in oxygenated water.
- Bring containers such as 5 gallon buckets, coolers, or totes, to secure the bags while travelling.
- 6 –8” catfish: Due to their spines, you must provide a container with pond water. Pond water should be collected on pick-up day to ensure sufficient oxygen.
- Bagged fish should be kept out of sunlight on your trip home.
- After pickup, go directly to your pond and put your fish in.

**Pick Up is at 9:00 AM\* at QCCA Expo Center Parking Lot**

**\*This is NOT an All-Day Event; Please be On Time. No refunds on fish not picked up.**

# 2022 FALL TREE SALE



PRE-ORDER ONLINE by October 16th

[www.rockislandswcd.org/trees.php](http://www.rockislandswcd.org/trees.php)

**3 Gallon Conservation Grade Trees & Shrubs**

**Varieties include:**

Pecan, Swamp White Oak, Bur Oak, N. Red Oak, Shingle Oak, Chinkapin Oak, Jackiana Oak, River Birch, Shellbark Hickory, Pignut Hickory, Northern Catalpa, Kentucky Coffeetree, Ninebark, Elderberry, Fragrant Sumac, Steeplebush, Snowberry, Coralberry, Carolina Allspice, Roughleaf Dogwood, American Strawberry Bush, White Meadowsweet Spirea, Blackhaw Viburnum, Ohio Buckeye, PawPaw & American Bladdernut

**Native Plants varieties include:**

Wild Senna, Queen of the Prairie, White Turtlehead, Pussytoes, Blue Star, Wild Petunia, Hairy Golden Aster, Ironweed, Thimbleweed, Prairie Alumroot & Eastern Prickly Pear

Pick Any 2 Grasses

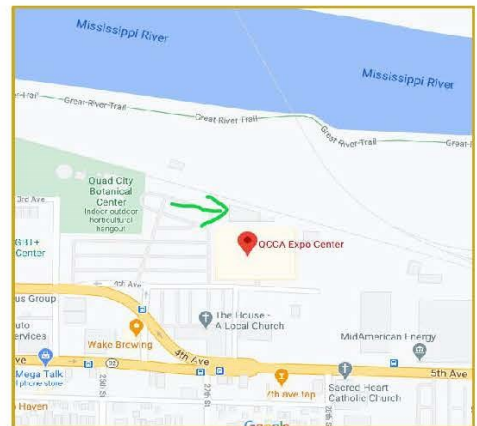
Dry & Sunny Pollinator Pocket

Moist & Partly Shady Pollinator Pocket

## PICK UP:

Thursday 10/27 & Friday 10/28  
9:00 am-5:00 pm

**QCCA EXPO CENTER – NORTH HALL**  
2621 4<sup>th</sup> Avenue, Rock Island



**ROCK ISLAND COUNTY SOIL & WATER CONSERVATION DISTRICT**  
USDA MILAN SERVICE CENTER - 3020 1<sup>ST</sup> AVENUE EAST - MILAN, IL 61264  
309-764-1486 x 3 | info@rockislandswcd.org | www.rockislandswcd.org

# CONSERVATION ASSISTANCE PROGRAMS

DON'T FARM  
NAKED



PLANT COVER CROPS

Are you interested in trying cover crops, but not sure where to start or worried about the cost? Need some guidance on species that are most suitable for your site

and best meet management goals? If so, consider reaching out to Rock Island SWCD.

Using funds from the IDOA Partners for Conservation Fund, we can cost-share up to \$40/acre, up to 80 acres max (or \$3,200). In order to be eligible, fields must have never before been planted with a cover crop. The landowner or farmer can take advantage of this program for up to three years.

To apply for or learn more about the program, please call Joey Deloian at 309-581-3002 or email [joseph.deloian@il.nacdnet.net](mailto:joseph.deloian@il.nacdnet.net).

## 2022 IL CORN COVER CROP COUPON & INCENTIVE PROGRAM



### Program Information

- \$7/A for existing cover crop acres
- \$15/A for new cover crop acres
- 1 year IL Corn Membership<sup>if not already a member</sup>
- Eligible to use with cover crop coupon
- Still eligible for programs such as Fall Covers For Spring Savings

### Requirements

- Complete W9
- Annual Program
  - Selected fields are no longer eligible to enroll or receive benefits from other ecosystems (carbon, GHG, water quality) markets for 2023 crop season (Fall 2022 cover crop planting)
- Field Info:
  - County, acres, 2022 crop, 2023 crop, PCM farmer, years field has had a cover crop, tillage
- Selected fields subject to provide additional information
  - Only 10% of farmers will be contacted

Cover crop coupon will be offered the same as the past, regardless of participation in incentive program.



[ILCORN.ORG/COVERCROPS](http://ILCORN.ORG/COVERCROPS)



LOU LIVA [lliva@ilcorn.org](mailto:lliva@ilcorn.org)

# COVER CROPS AT WORK

Keeping the soil in place & increasing infiltration

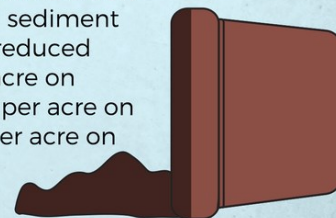


## THE TOOLKIT

Cover crops are tools to keep the soil in place, improve soil health, and reduce nutrient pollution from farm fields. The cover crop toolkit includes grasses, brassicas, legumes, and other broadleaf species.

## SOIL LOSS

Cover crops decrease, and in some cases, completely eliminate soil and sediment loss. On average, cover crops reduced sediment loss by 21 tons per acre on conventional-till fields, 6 tons per acre on reduced-till fields, and 1 ton per acre on no-till fields.



## INFILTRATION

Studies have shown that cover crops can increase water infiltration to the soil profile by two to sixfold. This improves soil water conditions and prevents excess runoff and erosion.

## HOW DO THEY DO IT?

Cover crops are able to provide these benefits to the soil because they:

- Cover and protect the soil surface from wind and water erosion
- Root into the soil profile, making channels for water flow
- Improve the soil structure
- Prevent the soil surface from sealing



**By keeping the soil in place and improving soil conditions, cover crops are mitigating pollution risk while also boosting the productive capacity of the soil.**

All data comes from a bibliography compiled by the Sustainable Agriculture Research and Education Program (SARE) and the University of Missouri. This graphic was developed under Cooperative Agreement No.83695601 awarded by the U.S. Environmental Protection Agency. EPA made comments and suggestions on the document intended to improve the scientific analysis and technical accuracy of the document. The views expressed in this document are those of the authors and EPA does not endorse any products or commercial services mentioned in this publication.

# CONSERVATION ASSISTANCE PROGRAMS

## NEW Pepsico Incentive Payment Program

2023 Grow Year  
Single Year Agreement

Receive payments for new and/or old conservation practices.

Exclusive For  
PCM Farmers

COVER CROPS	NOTILL/STRIPTILL	MRTN/10% Nitrogen Reduction
\$15, 1st/2nd year	\$10, 1st/2nd year	\$10, 1st year
\$10, 3+ year OLD	\$5, 3+ year OLD	-
\$25, 1st/2nd year NEW   \$15, 3+ year OLD		
\$20, 1st/2nd year   \$15, 3+ year OLD		-
	\$15 1st/2nd year	

Contact Lou Liva for details: (309)-391-2346  
LLiva@PrecisionConservation.org

### USDA ANNOUNCES NEW OPPORTUNITIES TO IMPROVE NUTRIENT MANAGEMENT

With high crop fertilizer prices and increasing attention focused on nutrient loss from cropland, it's critical to be as efficient as possible with your use of fertilizer. There are more opportunities than ever to get a nutrient management plan for your farm. The recently passed Inflation Reduction Act includes historic funding to support nutrient management planning. \$19.5 billion will increase funding for existing conservation programs, streamline funding opportunities, and increase program flexibilities. The Act includes \$8.45 billion for the Environmental Quality Incentive Program (EQIP) and \$3.25 billion for the Conservation Stewardship Program (CSP). EQIP and CSP are popular conservation programs in Rock Island County. It is estimated that there are 89 million acres of cropland (28% of total U.S. cropland) currently exceeding the nitrogen loss threshold. Some of your farmland may be included in those acres. If so, now is the best time to start working on your nutrient management strategy to improve profits while reducing nutrient loss.



NRCS and SWCD staff are available to provide assistance in nutrient management planning and can discuss conservation program opportunities with you. We want to help you save money AND keep those nutrients where you need them most - on your fields! All technical assistance provided by the District is at no cost to landowners. We believe knowledge is power so just having the nutrient management plan can help you make minor changes that can lead to bigger savings in the long term. By completing a plan, there is no obligation or commitment to any of the recommendations therein. All conservation programs are voluntary and offered on a non-discriminatory basis.

# CONSERVATION NEWS

## COPPERAS CREEK UPDATE

The latest round of the 319 Illinois EPA (IEPA) grant for Copperas Creek Watershed wrapped up March 31, 2022. The District wrote the grant in the summer of 2018 and began work on the conservation projects in the fall of 2020. In addition, the District implemented a robust education and outreach strategy as part of the grant which included three community workshops, four public stakeholder meetings, a watershed stakeholder survey on resource concerns, educational newsletters and materials as well as several presentations for partner agencies.

In total, IEPA granted cost-share dollars for projects, engineering, personnel time, and education in the amount of \$180,044. The final total spent was \$179,280 (99.6%). Additionally, RISWCD contributed \$21,211 in engineering technical assistance and personnel time and local landowners contributed a total match of \$188,615. National Association of Conservation Districts (NACD) also provided a portion of the funding for engineering technical assistance as part of their TA grant program. A big thanks to all the participants and partners for assisting us in making this grant a success!



**Total funds invested into the watershed = \$391,806**

### THAT'S A WRAP.....

RISWCD hosted a Copperas Creek wrap-up meeting April 7th, 2022 at the Illinois City Town Hall for the steering committee and stakeholders seeking input on effectiveness and satisfaction of the EPA grant funded projects as well as gauging interest in applying for additional funding in the future. With two cycles of implementation now completed, 21 landowners have participated in the program. Bob Danner who completed a streambank stabilization project in 2017 as part of the first implementation grant stated, "Before, I had erosion cutting into my field. Worked with the SWCD staff to review the site and come up with a



plan that included a cost estimate. The rock steered that water away from the bank better than I thought it would. Definitely worked and very happy with the process. It was installed in the latter part of 2017 and is still working. We have not had any serious erosion on the field since." The District has been involved with watershed planning and supporting conservation in and along Copperas Creek since 2007, a direct tributary to the Mississippi River. It is the intent to apply for a third round of funding from IEPA when the next funding opportunity is announced sometime this fall. If you live within the watershed and have a resource concern on your property and are interested in a future project, please contact Joey Deloian at (309) 581-3002 or [joseph.deloian@il.nacdnet.net](mailto:joseph.deloian@il.nacdnet.net).

### PROJECT TOTALS

2,980 feet of streambank stabilization

-  
1,820 feet of WASCOB

-  
1 rock chute structure

-  
1 acre of grassed waterway



Annual pollutant reductions:

360 tons of sediment

-  
413 lbs. of phosphorus

-  
795 lbs. of nitrogen



# CONSERVATION NEWS

## NACD ANNOUNCES 2022 TECHNICAL ASSISTANCE GRANT RECIPIENTS



RISWCD hired Joey Deloian in May 2021 as a Resource Conservationist apprentice. He is being trained and mentored over a 2-year period by retiring Resource Conservationist, Rich Stewart. This new RC II position was created to allow the transition of knowledge to the next generation of conservation leadership while maintaining the high-quality technical service needed by the community. Joey is currently working towards his NRCS Conservation Planner III certification while also learning about watershed planning, BMPs, and how to communicate with producers about the wants and needs of their operation. He stated "I have been extremely lucky to work for a District that allowed me the time and resources to attend the many trainings and events I was able to utilize over the past year without which I would not be where I am today."

This position is one of three positions partially funded by the NACD TA Grant .

National Association of Conservation Districts (NACD) announced on August 15th, \$15 million in 2022 awards from the NACD Technical Assistance Grants program. Now in its fifth year, the program in cooperation with NRCS, will provide ongoing funding for over 490 positions nationwide. This includes resource technicians, conservation planners, program support specialists and technical specialists based on the local needs and priorities identified by state leaders. These funds will support current projects for an additional 12 months. RISWCD is one of nine Illinois counties who were awarded funding to provide technical assistance to the community as well as staff training, outreach and assistance with conservation planning. This is the fourth year RISWCD has received funding for the TA Grant program. In total the District has been awarded \$132,985 in funding over the past 4 years. We are extremely grateful to NACD for their ongoing support to RISWCD and conservation districts across the nation.

## MILL CREEK WATERSHED PLAN UPDATE

An erosion survey was completed last fall over approximately 58 miles of streambank in the watershed. Field observations indicate that the severity of streambank erosion is high throughout the watershed. Results indicate it is responsible for delivering 11,611 tons of sediment, 17,644 lbs. of nitrogen, and 9,170 lbs. of phosphorus annually to the Rock River.

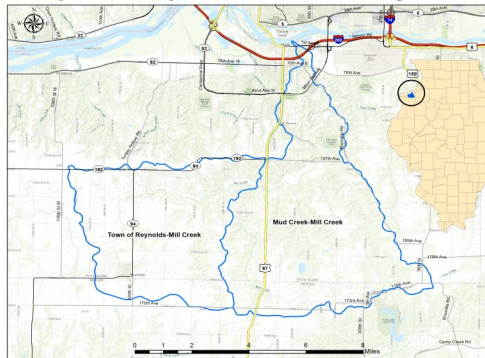
Streams in the Mill Creek/Mud Creek sub-watershed generate the greatest loads or 68% of total sediment, nitrogen and phosphorus. Mud Creek yields the greatest sediment per foot of bank of 39 lbs. compared to 29 for Mill Creek, 15.6 for all other tributaries and 20.5 lbs. for the watershed average. The lowest rates of bank erosion were observed in small, headwater channels and downstream of the Milan Beltway where Mill Creek intersects shale outcroppings prior to meeting the Rock River.

The erosion survey is just a portion of what is factored into the final watershed plan. The plan, which is being completed by Jeff Boekler of Northwater Consulting, is in draft stage and is expected to be completed by the end of 2022. This plan provides a living document and guide to critical conservation areas and conservation planning for the next 15 years. We are anticipating applying for implementation funding sometime later this year.

If you live within Mill Creek/Mud Creek watershed and would like to discuss resource concerns on your property, please contact our office and we would be happy to meet with you. There will be a public stakeholder meeting at Sherrard High School on December 1st to discuss the plan and future watershed goals. More details to come.

### STEERING COMMITTEE:

**Virgil Kain—Chair**  
**Lisa Geiger**  
**Jake Coyne**  
**Jim Coyne**  
**Tom Coyne**  
**Chris Nordick**



Funding for this project, in part, by the Illinois Environmental Protection Agency through Section 604 of the Clean Water Act.



# PARTNER UPCOMING EVENTS

## BI-STATE CONSERVATION ACTION NETWORK HOSTS NETWORKING MEETING

# BI-CAN

Bi-State Conservation Action Network

## Fundraising for Conservation

**BREAKFAST  
INCLUDED!**  
Goodwill Donation



### All Member Meeting

October 5, 2022  
8:30 a.m. - 10:30 a.m.

### Izaak Walton League

8440 N Harrison St.  
Davenport, IA 52806

### AGENDA

- 8:30 Breakfast
- 9:00 Welcome and Introductions
- 9:15 Panel Discussion

*Please bring any marketing materials your organization would like to have on display.*



PLEASE REGISTER ONLINE



Farmers & Foods  
Homegrown & Handmade

8 AM UNTIL NOON | SCHWIEBERT PARK, ROCK ISLAND

EVERY  
SATURDAY!

SUPPORT  
YOUR  
LOCAL  
FARMERS!

Year round  
on the first  
Saturday of  
the month  
from 9-10  
am @  
Nahant  
Marsh

## NATURE HIKE



# RISWCD SPONSORS & SUPPORTERS

A big thank you to our current sponsors featured below! The printing of our bi-annual newsletter would not be possible without their support.



## M & M Enterprises QCA

Quad City Water Conservation Specialist

<http://mmenterprisesqca.fixr.com/>  
309-854-3983

**FREE 1 HOUR CONSULTATION**

- Lake Aeration Engineering/Stocking
- Lake Treatment Consultation
- Shoreline Cleanup/Repair
- Water Hazard Removal/Marking
- Beach/Seawall Engineering
- Annual Maintenance Plans
- Eco-Friendly Products
- Transect Mapping

### Special Promotion

First Five New Customers to Hire MME QCA for their Lake Or Pond Services Receives 20% Off With This Coupon



Phone: 309-755-7644 • [www.mte47.com](http://www.mte47.com)



88 Forrest Keeling Lane  
Elsberry, MO 63343  
800-356-2401  
[forrestkeeling.com](http://forrestkeeling.com)



**NATIVE GRASS AND WILDFLOWER SEEDS**

PURE AIR NATIVES

#PlantYourLegacy 866-567-3337



## Quad City Conservation Alliance

2621 4<sup>th</sup> Avenue  
Rock Island, Illinois 61201

A Non-Profit Coalition of Conservation Clubs



# GOLD STAR FS, INC.

Thank you to our RISWCD newsletter sponsors. Their support makes this publication possible.